

Independent Sexual Violence Advisor Service

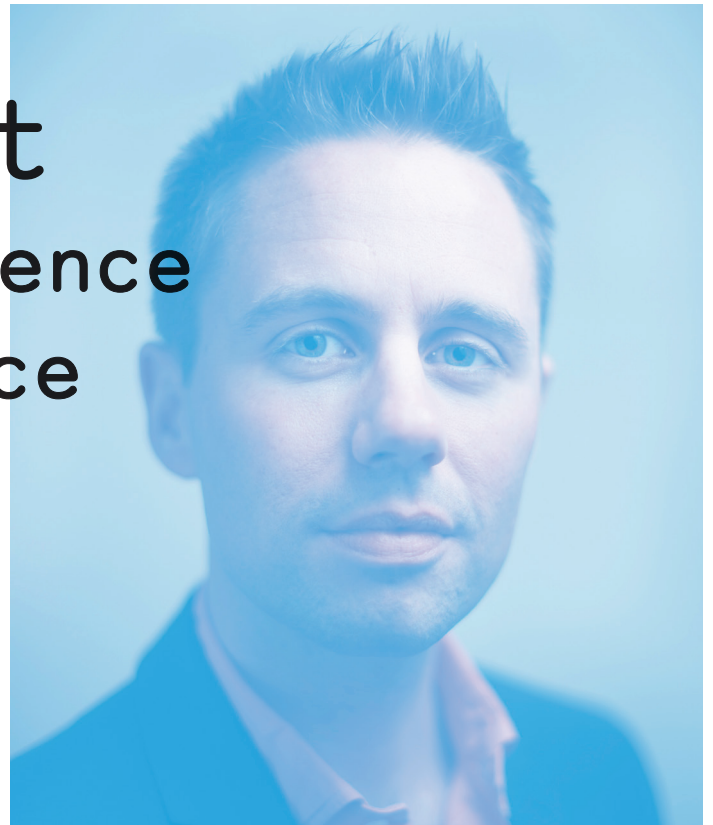
The Independent Sexual Violence Advisor (ISVA) service at Survivors Manchester offers support, information, practical and emotional support for men and boys affected by sexual violence experienced in the past or present. The aim of the service is to help you cope with the aftermath of sexual violence, including supporting you through the criminal justice process.

For those considering reporting to the police - this can often be a time of great stress and uncertainty. For some, this could be the first time they have talked about their abuse. The reporting process and court proceedings can often seem overwhelming and hard to understand. It is perfectly natural to be anxious and to have questions and concerns about how to proceed in a way that is best for you. The ISVA is specially trained to offer assistance throughout the criminal justice system - from initial report to court and beyond, from start to finish.

“The aim of the service is to help you cope with the aftermath of sexual violation”



We're proud to work closely with St. Mary's Sexual Assault Referral Centre to offer you a choice of male or female ISVA.



“The ISVA is specially trained to offer assistance throughout the criminal justice system”

The service is confidential and completely impartial - it is not linked with the police. Although the ISVA can explain what happens when you make a police report and how the criminal justice process works, you do not have to report to the police. The role of the ISVA is to ensure that you have all the necessary information and support to make an informed choice about what is best for you.

#BreakTheSilence

confidential support

www.survivorsmanchester.org.uk

support@survivorsmanchester.org.uk

Tel. 0161 236 2182

 @SurvivorsMcr



The ISVA service at Survivors Manchester can assist with the following:

- An initial assessment to identify your needs, followed by the development of a tailored support plan
- Practical and emotional support.
- Assistance to attend a Sexual Assault Referral Centre (SARC) where required.
- Regular and ongoing face-to-face and telephone support according to your needs.
- Support to access health and other related services.
- Information, guidance and support to report to the police, should you wish to do so.
- Support to attend any relevant interviews and meetings with the police and relevant agencies.
- Liaison between the police, Crown Prosecution Service and any legal representatives acting on your behalf.
- Act as the main point of contact for updates regarding the investigation and/or court case.
- Advocate on your behalf.
- Arrange pre-trial visits and support you at court.
- Apply for special measures to relieve stress and anxiety around attending court.
- Support to attend court proceedings
- Signpost to specialist services, including those offered by Survivors Manchester.
- Safety planning.
- Support around housing and access to services.
- Assistance to apply for Criminal Injuries Compensation.
- Provide information and supporting around complaints procedures.

—

ISVA support is not a clinical or therapeutic service; however, the ISVA can signpost you to relevant counselling services to meet your specific needs.

Confidentiality/Sharing information protocol:

All Survivors Manchester staff abide by a Confidentiality Policy which means that what you discuss is confidential within the following limits when information can be shared:

- 1) If you consent to named organisations or individuals;
- 2) Should you choose to disclose information which identifies an existing or imminent risk, danger or harm to you or any child/children;
- 3) Should you choose to disclose that you intend to carry out act/acts that are likely to put others at risk or injury;
- 4) Should you disclose new information during a police investigation;

All Survivors Manchester staff intend to try to tell you when information is being shared, unless it is not safe for you or your children or if we can't contact you. If your ISVA or Survivors Manchester staff member has to share information in this situation, only relevant information will be shared that will improve you and/or your children's safety. The ISVA will talk this situation through with their Line Manager and note in your records any information shared. You have access to your record on request.

—

For more information about the ISVA service including staff profiles, please visit our website www.survivorsmanchester.org.uk or call **0161 236 2182**. Alternatively, you can access email support via support@survivorsmanchester.org.uk

#BreakTheSilence